

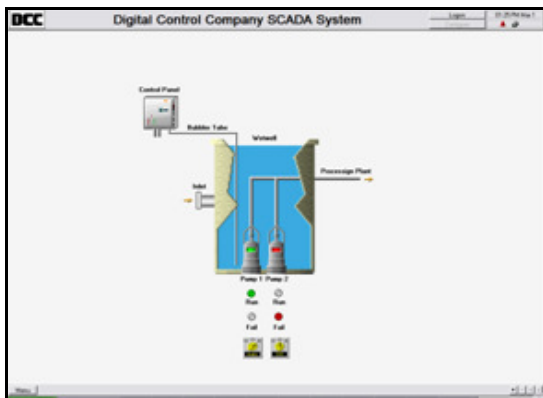


Supervisory Control and Data Acquisition (SCADA) System

Manufacturer of High Performance Instrumentation and Control Systems

Description:

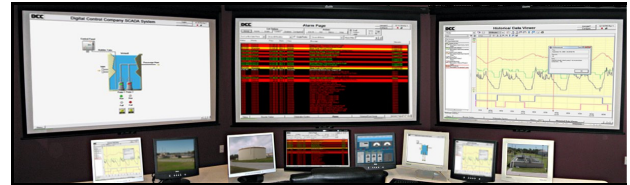
The DCC Supervisory Control and Data Acquisition (SCADA) System is a remote monitoring and control system primarily intended for use in both water and wastewater collection and distribution systems. It provides users and municipalities with accurate level measurement information, local and remote pump control, system configuration, track and report lift station performance, system failure alarms notification, emergency level alarms notification, and other events as they occur.



SCADA System Lift Station Page

Applications:

- Wastewater Lift Stations
- Water and Wastewater Plants
- Groundwater Level Monitoring
- Landfill Liquids (Leachate) Collection
- Water Distribution and Control
- Storage Tanks
- Water Irrigation Control
- Canal Dam Gate Automation
- Storm Water Level Control
- Flood Warning
- Rain Stations
- Environmental Data Acquisition
- Most Fluid Monitoring and Control Applications



SCADA Control Room

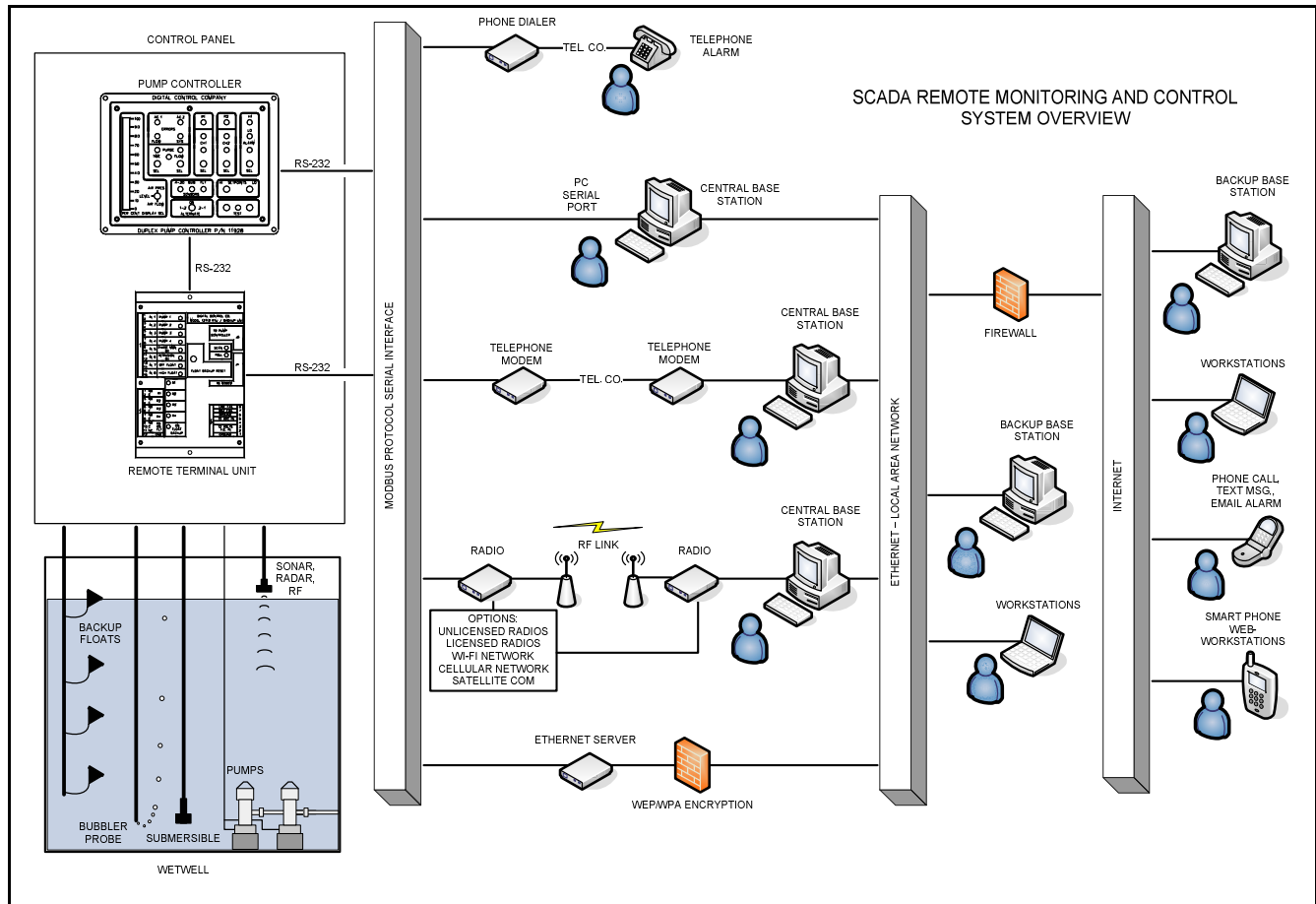
Features:

- Early warning of emergency level alarms and system malfunctions via graphical interface (VTS SCADA), phone, pager, e-mail, and on-site alarm notifications.
- Change or override control points for each individual station pump controller (on-site and remotely).
- Remote data access.
- Alarm and event manager.
- Historical data logging and viewing.
- Track and report lift station performance.
- Track rainfall and give rainfall alarms.
- Secure networking and system redundancy.
- HMI - VTS SCADA system integration.

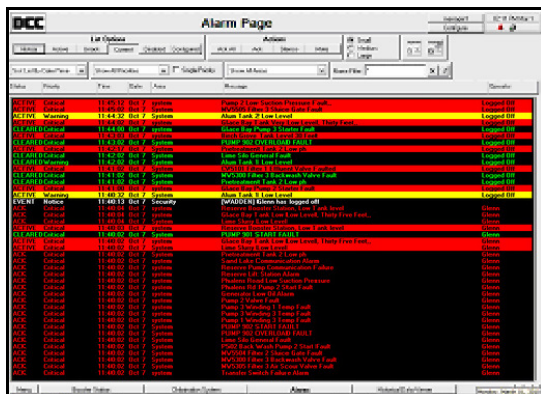


Rain Station

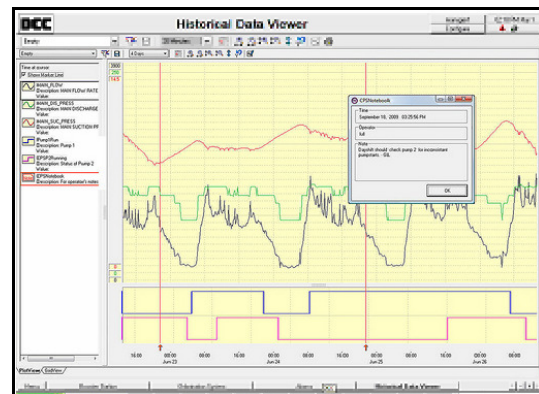
The DCC SCADA system is an integrated solution consisting of a central base station (PC) with remote access capability for workstations and a network of Remote Terminal Units (RTU) for each station. The central base station can be connected to a local area network with Internet access which permits other computers to be added to the system as backup base stations or mobile workstations. A variety of Modbus based wireless communication devices such as licensed and unlicensed radios, WI-FI, cellular, and satellite networks in addition to telephone lines can be used for communications between the central base station and the remotes sites.



SCADA System Overview



SCADA System Alarm Page



SCADA System Historical Data Page

4260 114th Terrace N, Clearwater, FL 33762
 Toll Free (800) 335-5219 • Office Phone (727) 547-1622 • Office Fax (727) 547-1722
 E-mail - dcc@digitalcc.com • Website - www.digitalcc.com